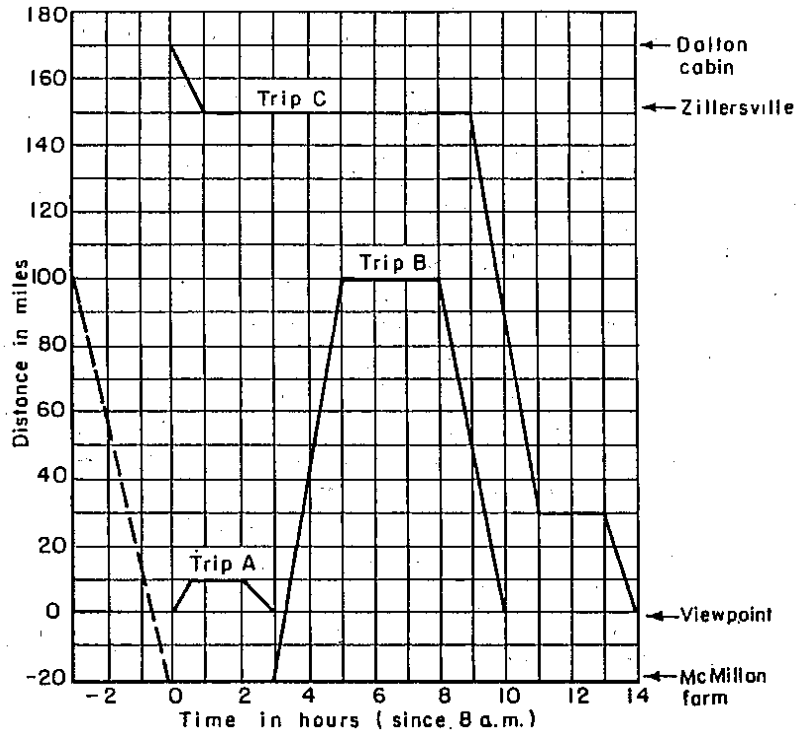


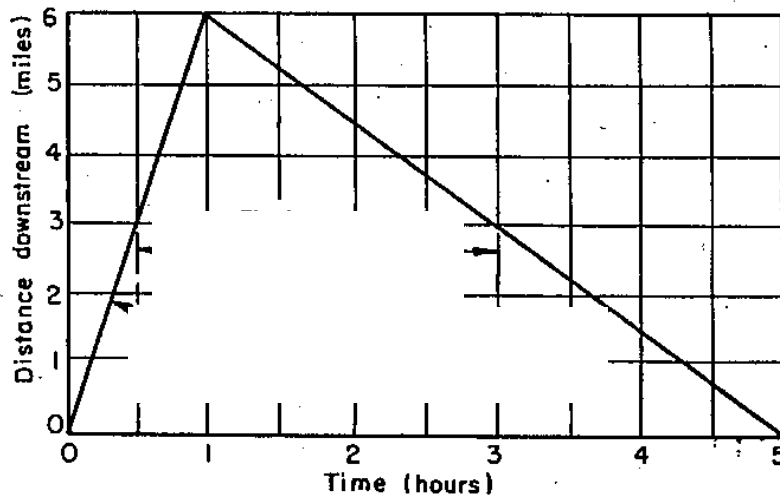
SOLUTIONS: Green Practice Test Graphing Goal 3:

1.



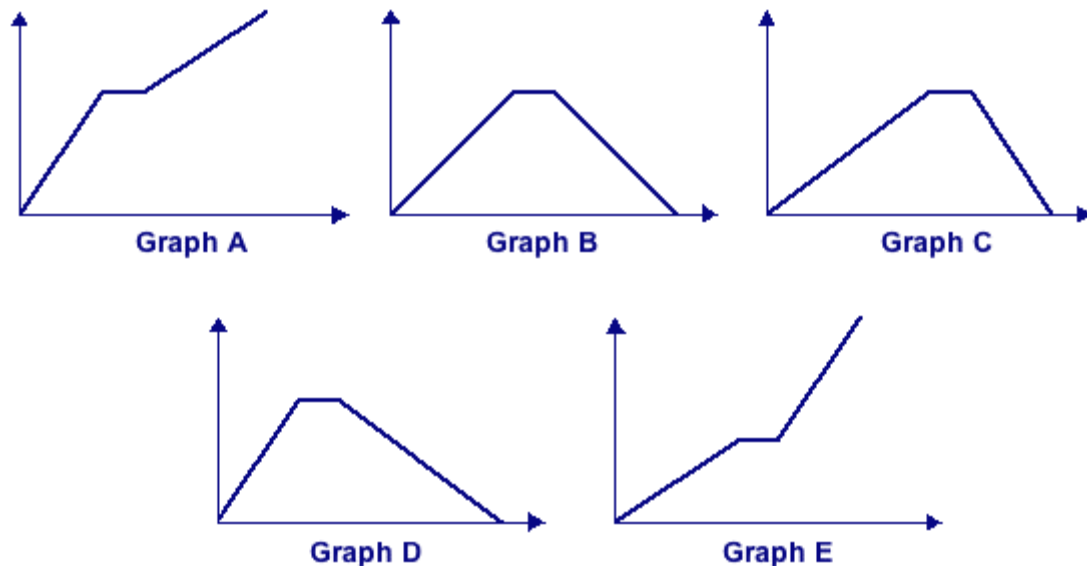
Trip C – Mr. Dalton has a fishing cabin on a lake 20 miles from Zillersville and 170 miles from Viewpoint. He left his cabin at **8 a.m.** and drove to Zillersville in **1** hour(s) at **20** miles per hour. During the **8** hour(s) he was in Zillersville, he purchased groceries, ate lunch, and visited friends. Then he left at **5 p.m.** and drove **120** miles in **2** hour(s) before he stopped at a service station for **2** hour(s). Finally, he left and drove onto Viewpoint in **1** hour(s) at **30** miles per hour.

2.



- 2A. 1 HOUR 2B. 6 MILES 2C. $2\frac{1}{2}$ HOURS

3. Short Field Trip



Answer: Graph B

The graph depicts the relationship between time in minutes –x axis and altitude in feet y axis. The plane takes off and over the next 8 minutes as the time in minutes increases the altitude in feet increases fairly rapidly. After a few minutes as x increases y remains constant as the plane has leveled off. Due to engine trouble the plane then begins its descent so as x continues to increase y decreases fairly rapidly until it lands.

4. A $c = 5 + h$

4B. 1-8 is a good domain because an average work day is 8 hours

4C Input - Output table -Table of values

h	0	2	4	6	8
c	5	7	9	11	13

4D. Graph

4E.

- This graph represents the relationship between the hours Chan worked (h)- (independent variable) and the dollars he charged (c) (dependent variable).
- As the hours worked (h) increases so the dollars earned (c) increases at a steady rate of \$1 per hour + \$ 5 for the material